

- Supports all EMS standard underground electronic markers
- Detection depth up to 1.5 metres with ball markers
- Metal detector feature for locating manhole & pit covers
- Very easy to use and cost-effective



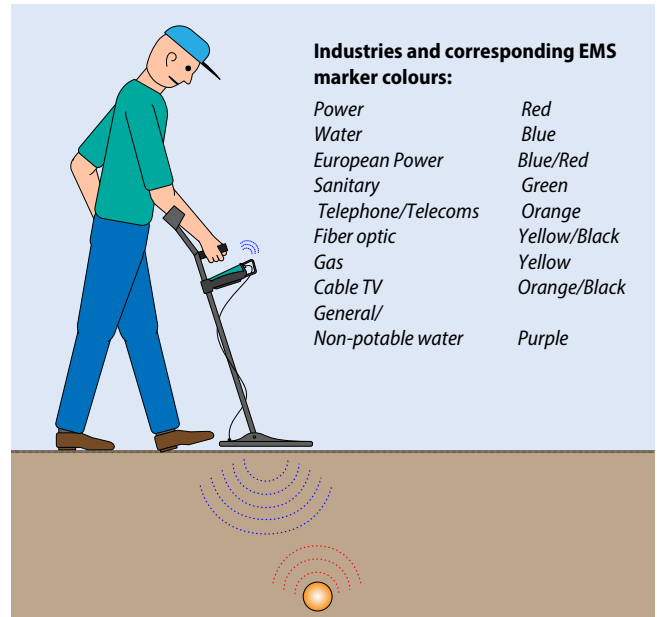
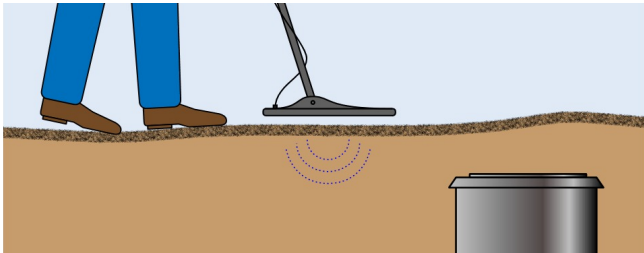
*Supports nine marker types!*



## Handy EMS locator

Vesala EML9 EMS (Electronic Marker System) locator is the affordable and handy alternative for the big EMS tracers. EML9 supports all nine industry standard EMS marker types listed in the table to the right. The newest markers called "European Power" and "Fiber Optic" are supported.

Besides EMS marker locating, EML9 has a metal detector feature which adds its usability further: Metallic manhole and pit covers are often covered with ice or dirt, but with EML9 they can be located in depths up to 30cm. No need to purchase a dedicated metal detector for this common need any more.



## What is the EMS system

Electronic EMS and Omnimarker markers are available in different shapes, such as balls, rings and plugs, and they are widely used especially in telecom and electric branch. They can be used to mark various underground objects, such as cable route corners, cable junctions and end points. In another industries they are used in a similar manner to mark specific objects. The passive, colour & frequency coded markers are easy to use and give good location reliability.

## Tranceiver technical specifications

### Adjustments

6-step gain adjustment, 4-step audio volume adjustment

### Connectors

BNC female for the EA3 search coil cable

### Indicators

12-step LED bar for receiving signal level & 11 other LED indicators (Power, MODE, GAIN and metal detector). Internal speaker for tracing signal and other audio features

### Batteries

6 pcs. 1.5V IEC LR6 alkaline battery. Maximum battery voltage 10.5 V. Low battery warning at approx. 6.5 V

### Power consumption

30...500 mA, typical 100 mA

### Enclosure and weight

ABS 155 x 90 x 50mm, IEC 60529 IP55, weight approx. 440 g with batteries

### Conditions

Operating conditions -10...+40C, storage -20...+40C (without batteries)

## EML9 features

EML9 is sensitive: it can detect the commonly used ball markers from up to 150cm depth underground, which is way beyond their recommended assembly depth.

As EML9 supports all standard EMS-marker types, including the newly released types, it offers cost savings and added safety: E.g. excavator drivers can check the target's exact location before digging to minimize risk of damage.

EML9 is easy to use and handy, and it indicates location of buried markers with clear sound and light signals.

EML9 basic setup includes the EML9-LV transceiver, EML9-KV carrying shaft and EA3 search coil with cable and adapter.

EML9 replaces the previous Vesala EML7 device with several enhanced features and improved robustness.

## Search coil & shaft technical specifications

### EA3 search coil (antenna) coil voltage

Max. 120 Vp

### Cable & connector

AK1 coaxial cord, length 1 m

### Material & dimensions

Hard polyurethane and epoxy, diameter 400 mm, height 45 mm, weight approx. 550 g

### EML9-KV shaft material & dimensions

Aluminium, plastic, polyamide. Adjustable length 950 .. 1170 mm. Weight approx. 700 g

© H. Vesala Ltd. 2447. Contents subject to change without notice.  
VESALA is a registered trademark of H. Vesala Ltd.

Made in Finland

Manufacturer:

**H.VESALA Oy (Ltd.)**

Peräsimentie 1, FI-03100 NUMMELA, FINLAND

Tel. +358 44 200 2005

Email: info@vesala.fi

Web: www.vesala.fi